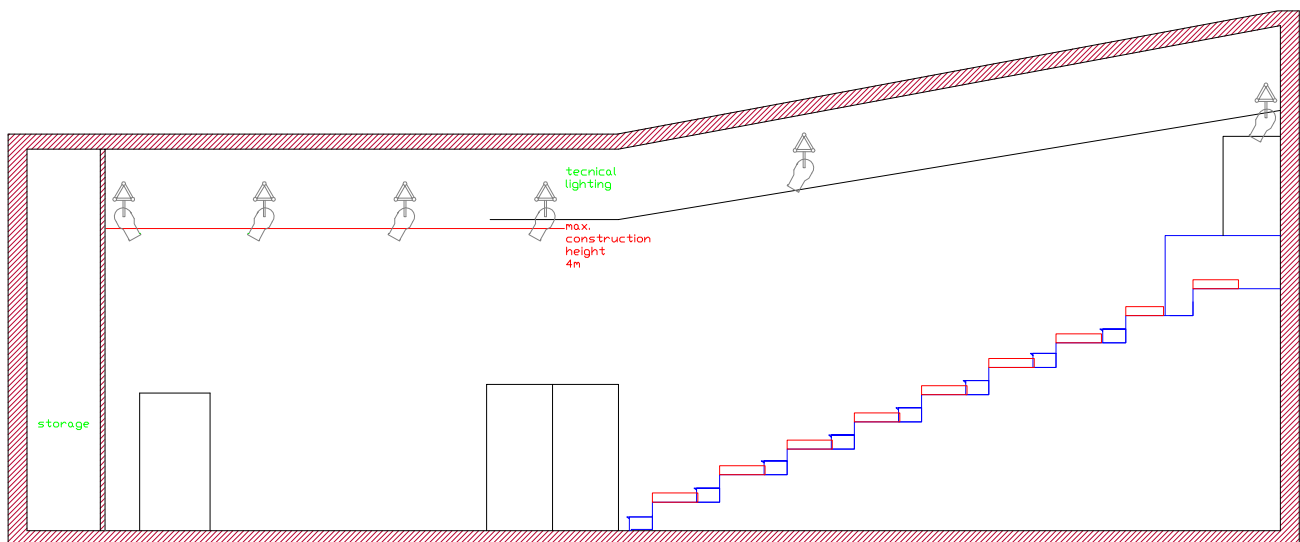
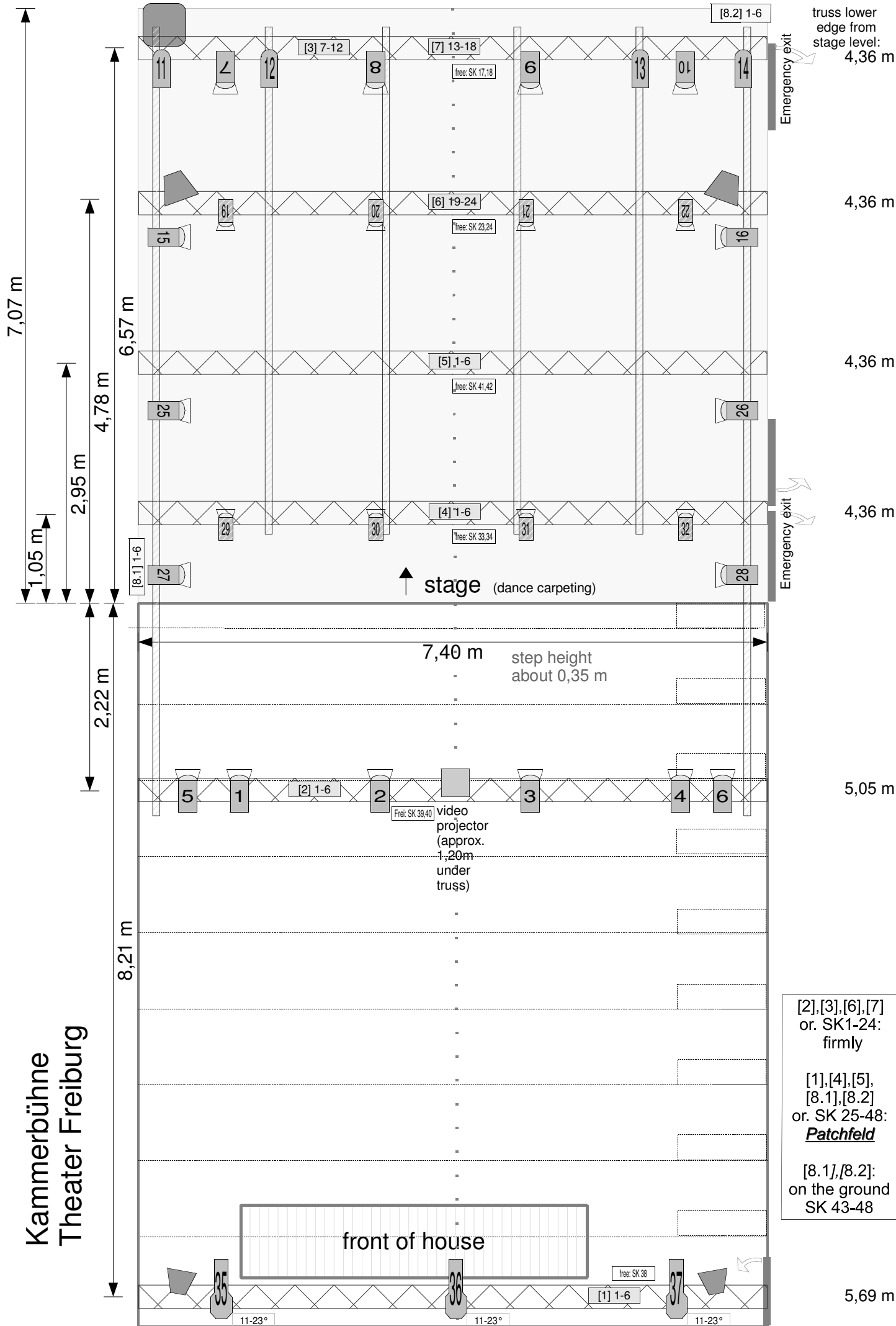


THEATER FREIBURG	
floor plan, centerline section Kammerbühne	
production :	
director:	set designer:
premiere :	scale: 1:100

Note:
 Height limit: 4,36 m some spotlights hang lower
 Construction height: 4,00 m!

Seats are pillow placed on the steps





key:

Theater Freiburg
Kammerbühne



PC 1 KW



PC 500 W



Par 64 1KW CP 62



Profile spot 1,2 KW 11-23°




speakerbox

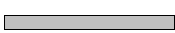


subwoofer (in wall)


Additional headlights available on request:

3 x  profile spot 750 W 25-50°


2 x  profile spot 500 W

4 x  Sunstrip 700W

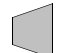
5 x  PC 500 W

1 x  PC 1KW

5 x  Par 64 1KW

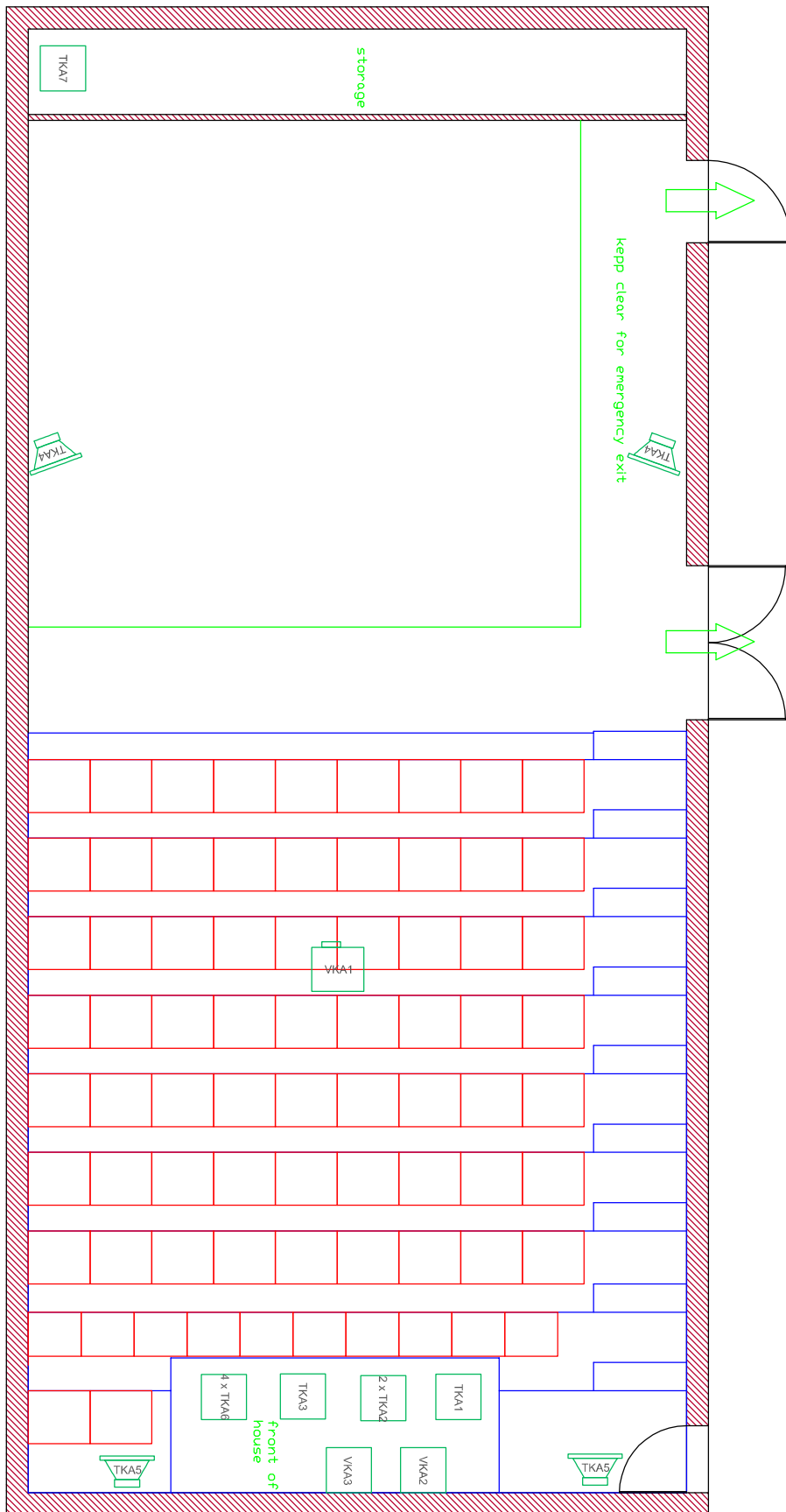
6 x  Par 64 1KW short

1 x  Par 56 300W

div.  floodlight 1KW, 500W, 150W



smoke



THEATER FREIBURG

sound plan

Kammerbühne

scale 1:75

date: 07.2016

THEATER FREIBURG

Stand: Juli 2016

Technical Direction
Tel: 0761 201 2859 / Fax: 0761 201 2899

Kammerbühne

1. sound equipment

sound equipment/ function	amount	symbol
mixing desk Yamaha 01V	1	TKA1
Ableton LIVE9.0 on Mac	1	TKA3
12" d&b 1210	2	TKA4
JBL C5	2	TKA5
Mikroports Sennheiser SKM 2000	2 roots	TKA6
Sub 18" self built	1	TKA7

2. video equipment

video equipment/ function	amount	symbol
projector SANYO PLC-XU105,4.500 ANSI-Lumen	1	VKA1
videomixer	1	VKA2
Mac Pro Video-Rechner	1	VKA3